

Presentation of the company



Milivojević inženjering d.o.o.  
Jarmenovci bb, Topola, R. Serbia

phones: + 381 (0) 34 6828 024, + 381 (0) 60 425 00 69, + 381 (0) 62 166 27 76  
e-mail: [office@milivojevicinzenjering.com](mailto:office@milivojevicinzenjering.com)

# Where are we

Adress: Jarmenovci, Topola, R.Serbia

Coordinates: 44.186703, 20.548328



# What we work

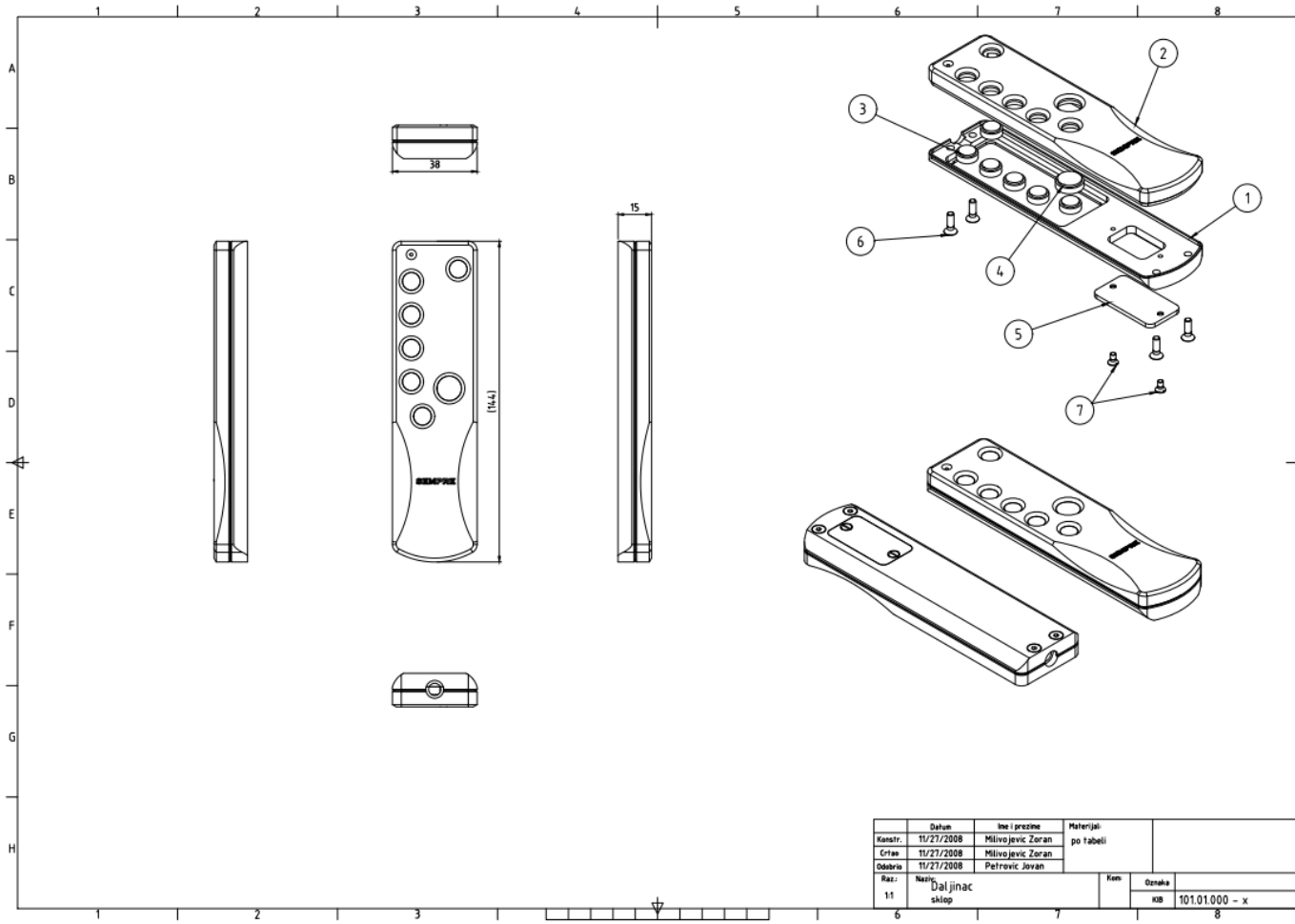
- Tools and machines construction
- Cutting with wire EDM
- Milling with three, four and five axis
- Turning with 2+ axis, with barloader

## - Tools and machines construction

We construct machines and tools in 3D software and make technical documentation

Idea → 3D models → Assembly → Drawings

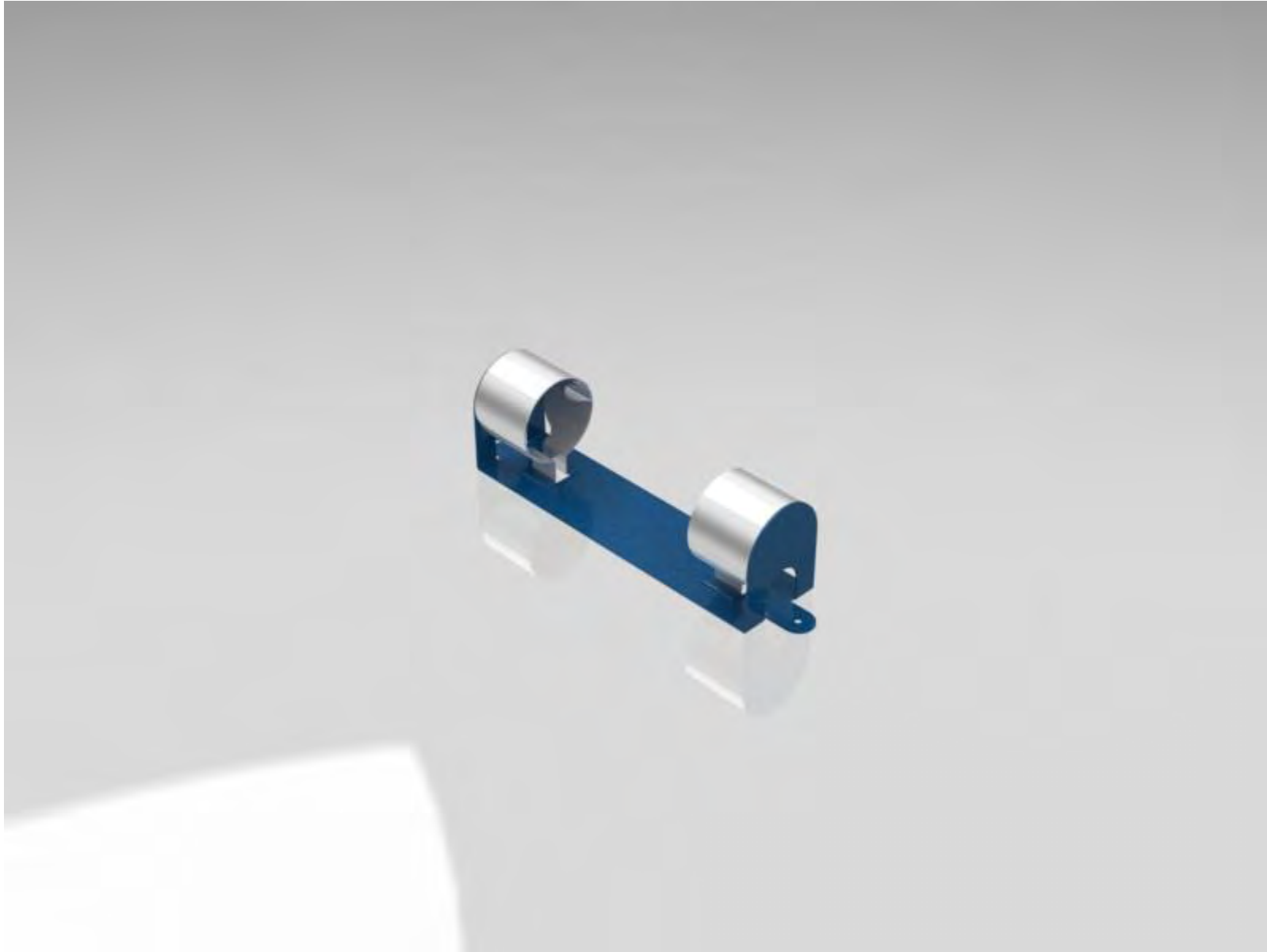
# Our design



# Assembly exploded view



# Render from 3D model



## - Cutting with wire EDM

In our company we have a AGIE Agiecut 100D, wire EDM machine

Technical details:

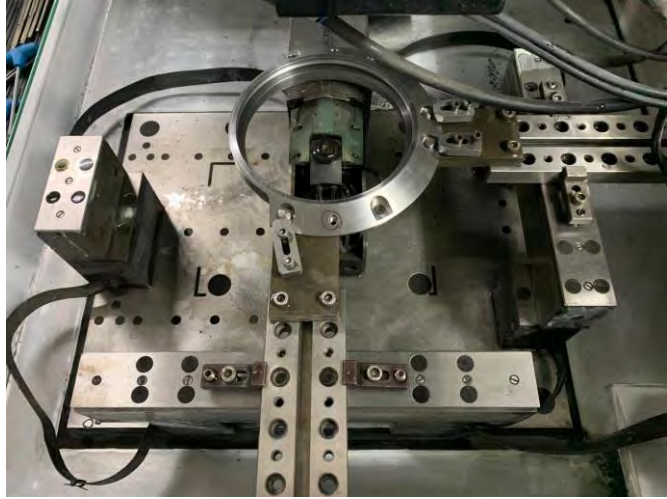
X 300mm, Y 200mm, Z 256mm

Wire from 0,05 to 0,3mm













- Milling with, three, four and five axis

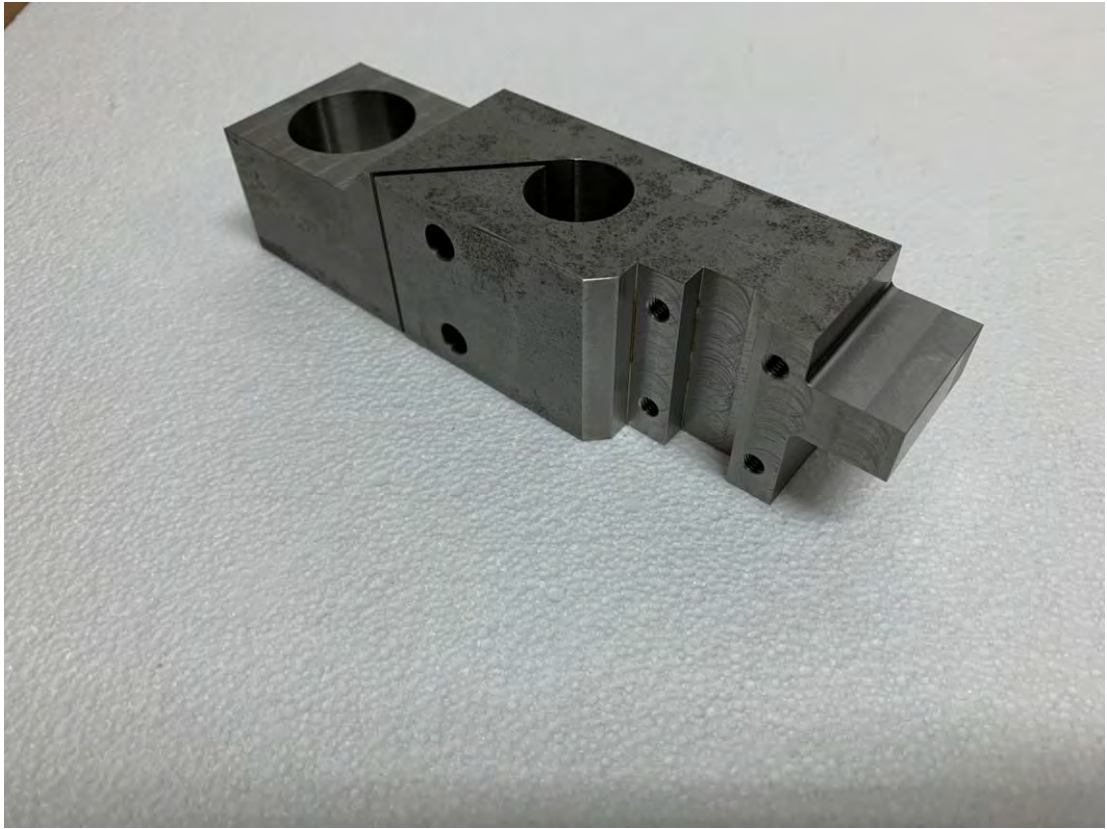
In our company we have milling machines Maho MH800C with four axis and Maho MH800C with five axis

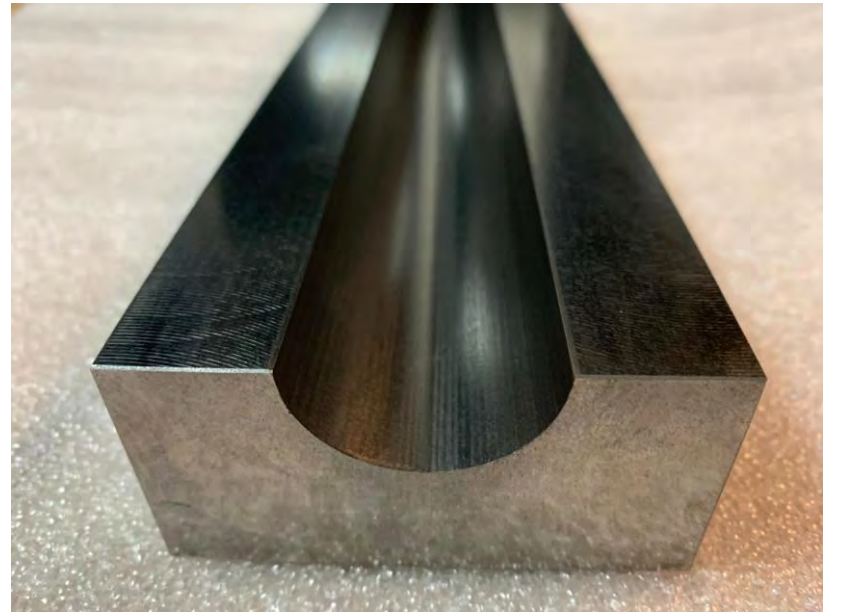
Technical details:

X 800mm, Y 500mm, Z 600mm

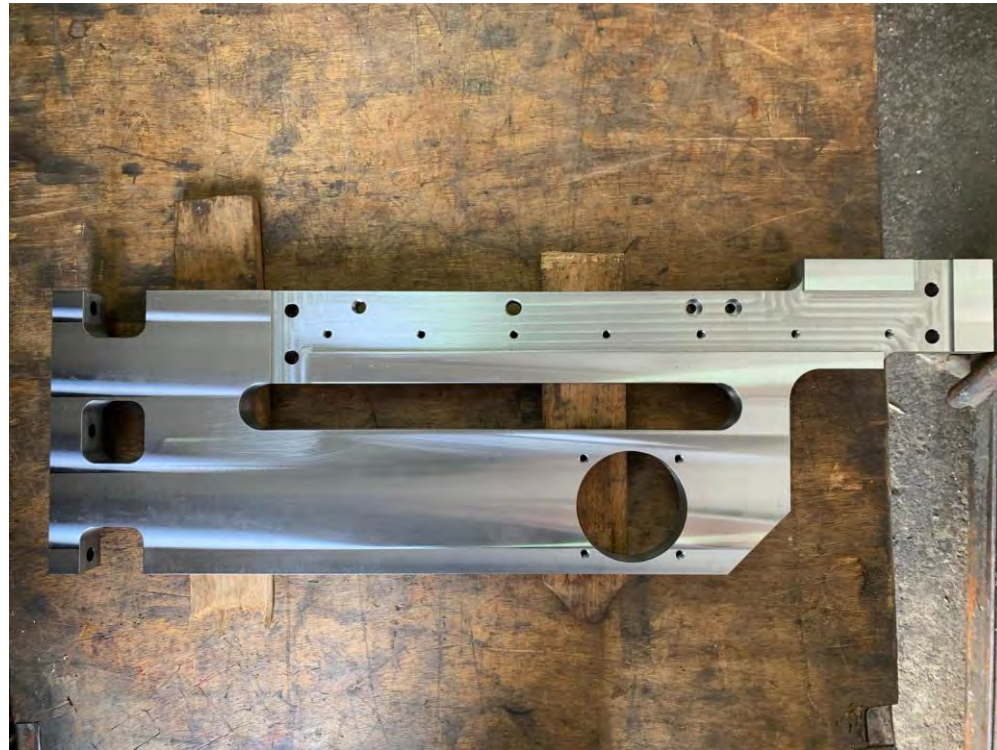
Horizontal and vertical plane (automatic moving)



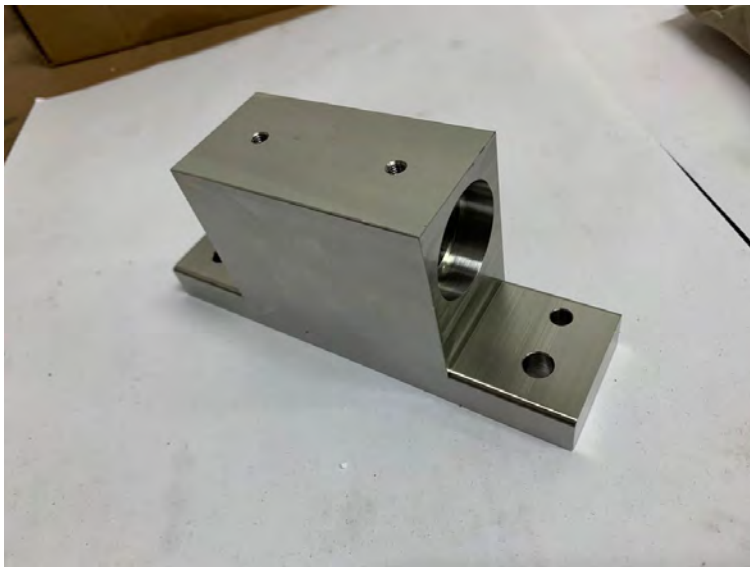
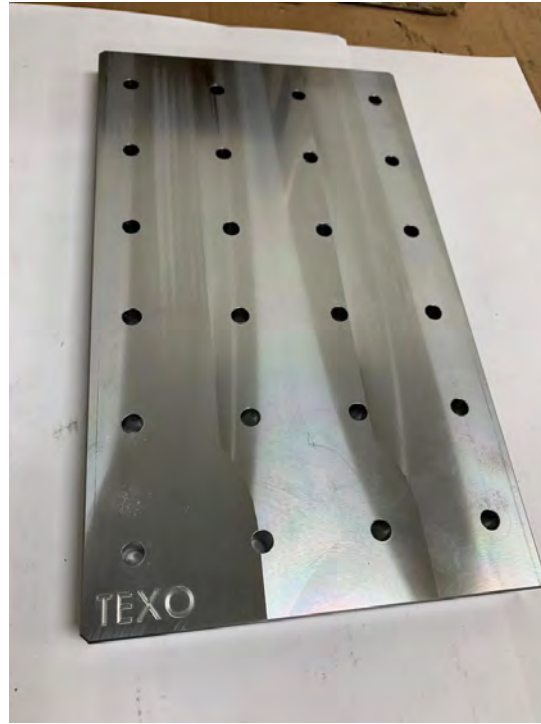




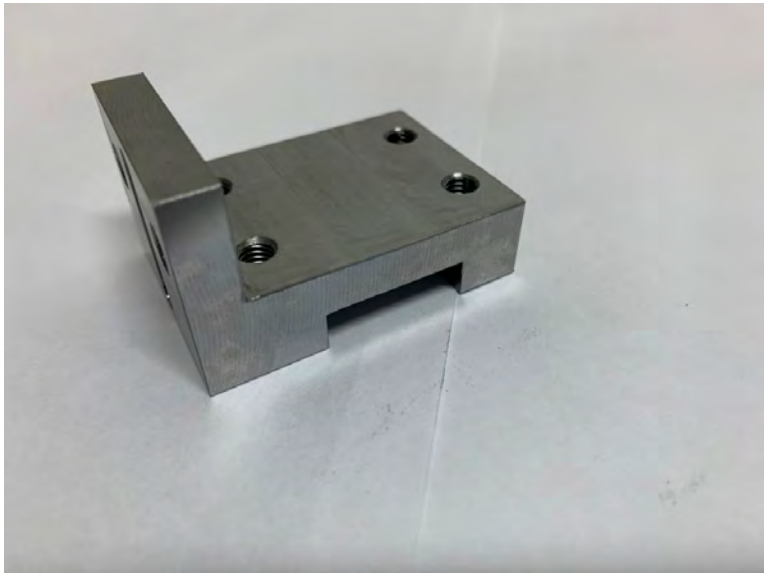
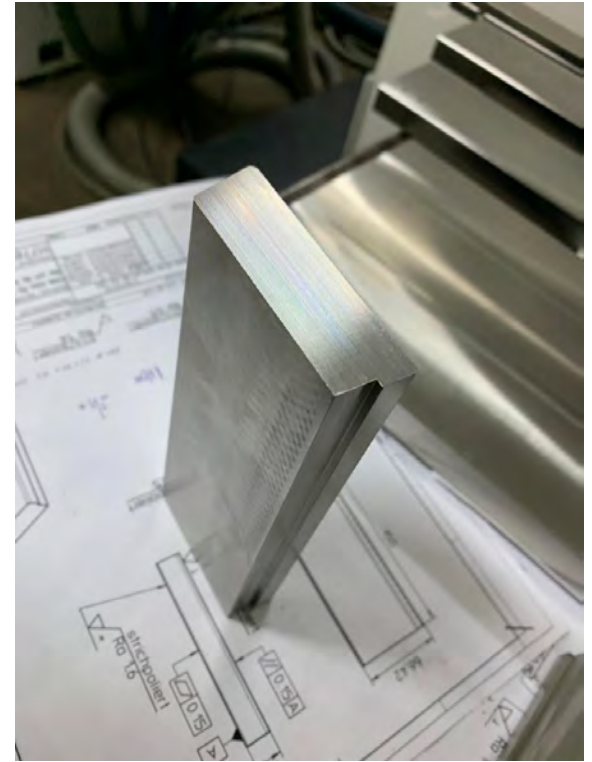
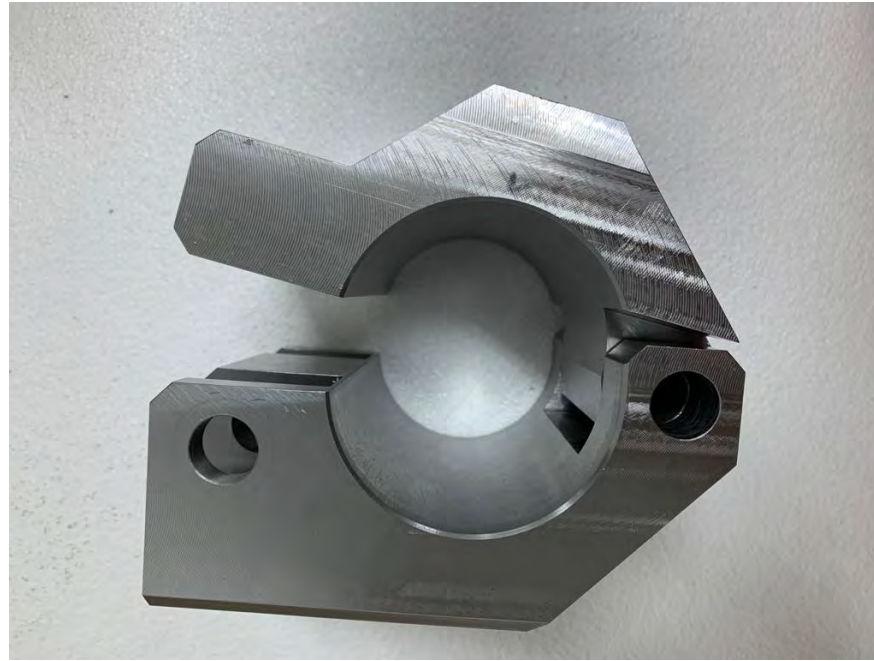
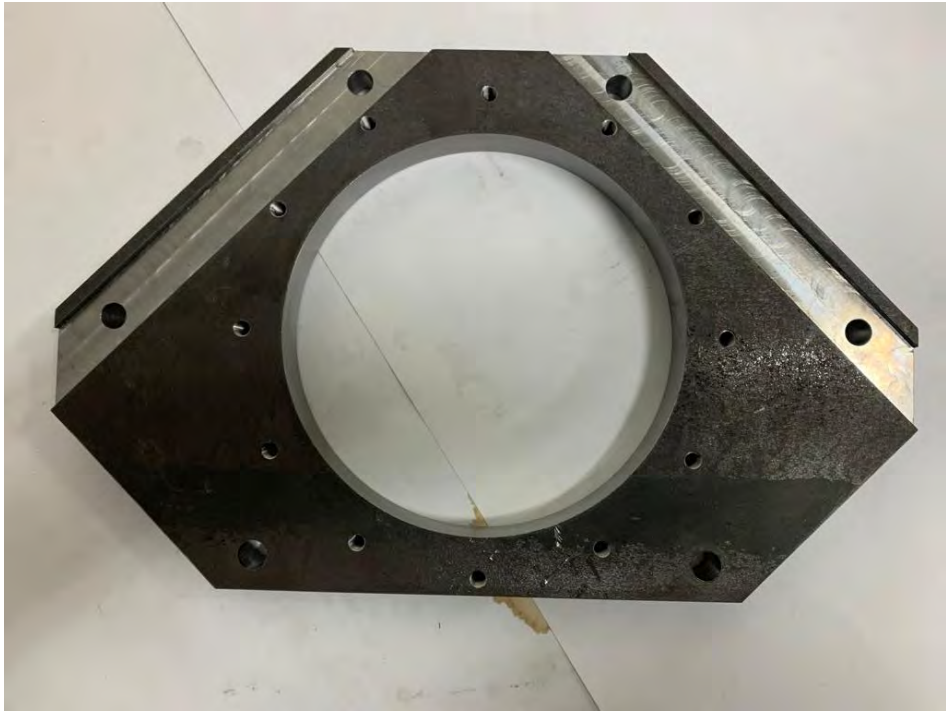


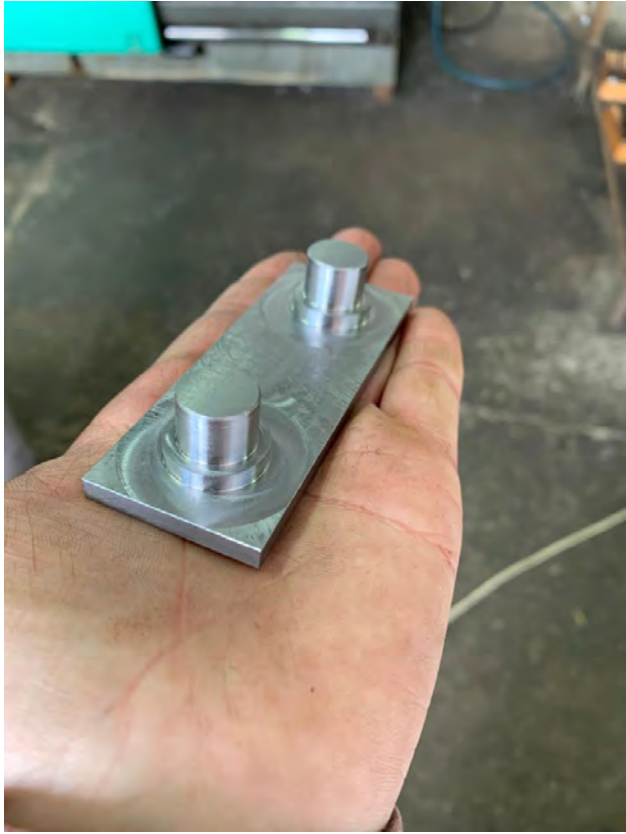




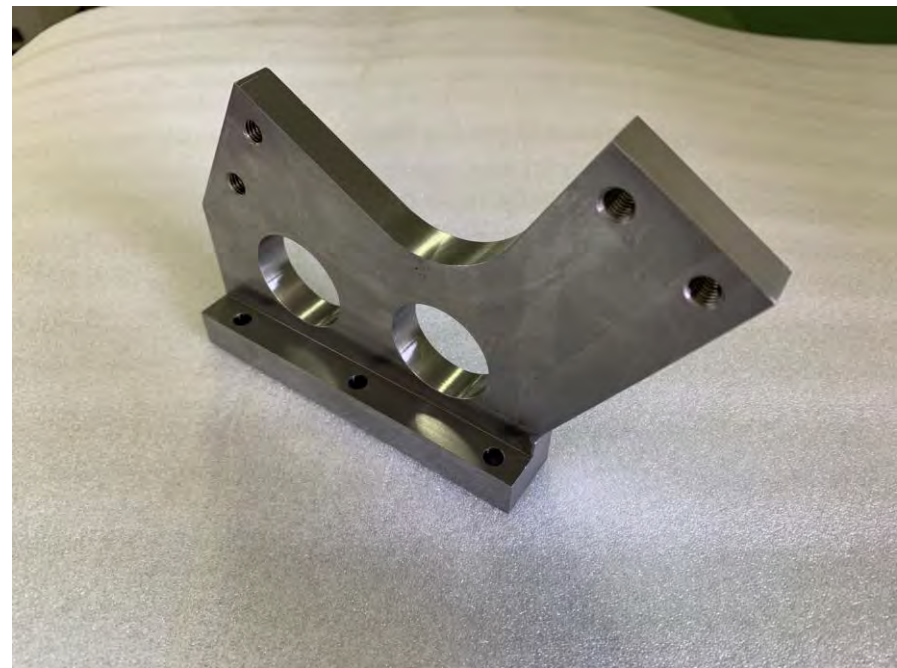












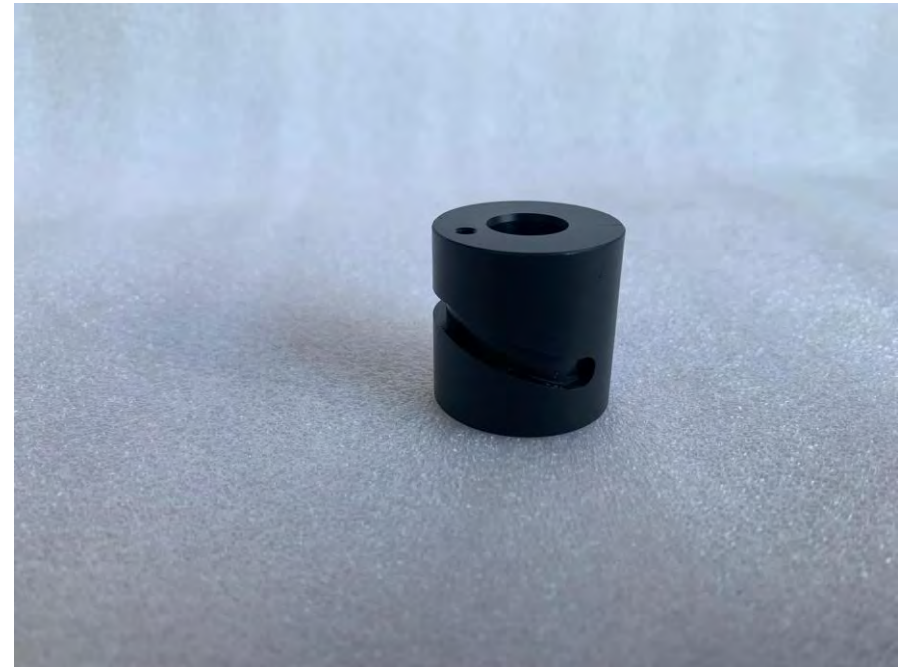
# Turning with 2+ axis, with barloader

In our company we have turning machines with 2+ axis and barloader

Technical details:

X 210mm, Z 400mm

C axis, turning with barloader up to X 42mm and Z 400mm







# Thank you for your attention!

Milivojević inženjering team